



BAHRIA TOWN



ZURAACO
REAL ESTATE SERVICES & BUILDERS



ZURAACO RESIDENCY 2

The True Meaning of Luxury and Convenience

ZURAACO RESIDENCY 2

1 and 2 state of art luxurious bedroom apartments with spacious interiors, refined finishing, perfect location and a range of amenities. The views present a lifestyle you deserve.

Dream of a fine standard of comfortable lifestyle is under construction and soon will reveal itself as a reality. The ZURAACO Residency 2 has already cleared the phase of its soil testing and is awaiting further formalities. Cozy 1 and 2-bedroom apartments, located in the heart of Bahria Town Karachi's downtown are being offered at amazingly reasonable prices. Grab the chance and reserve your apartments today.

1 & 2 LUXURY BEDROOMS

Precinct - 8, Ashar fountain
Plot No 8 to 11, Ground plus 12 floor project





“ A LUXURY
EVERYONE CAN
AFFORD

LOCATION

Zuraaco Residency 2 is located in the most ideal location of Bahria Town Karachi. Zuraaco Residency 2 is located extremely close to Ashar Fountain, and enjoys proximity to Midway Mosque and Grand Jamia Mosque. Also situated just 12-15 minutes' drive are Medical and healthcare facilities such as Bahria International Hospital which is only 2.5 km away.

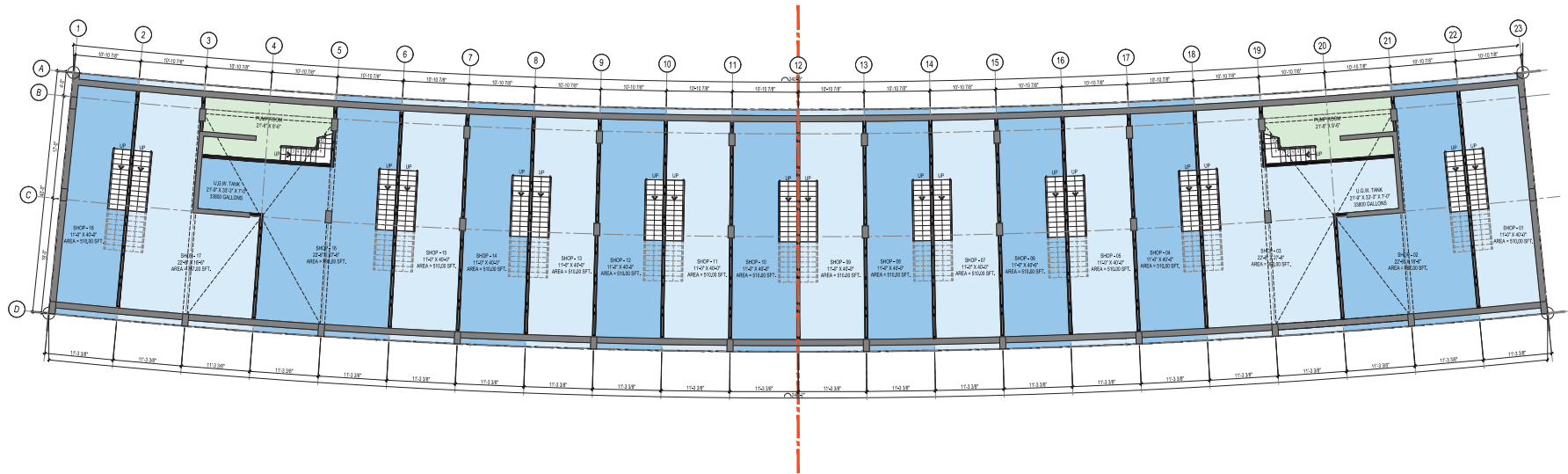


The background is a dark blue gradient. It features several large, abstract gold-colored geometric shapes. In the top right, there's a large triangle pointing downwards. In the bottom left, there's a large triangle pointing upwards. A long, thin diagonal line runs from the top right towards the bottom left, intersecting the other shapes.

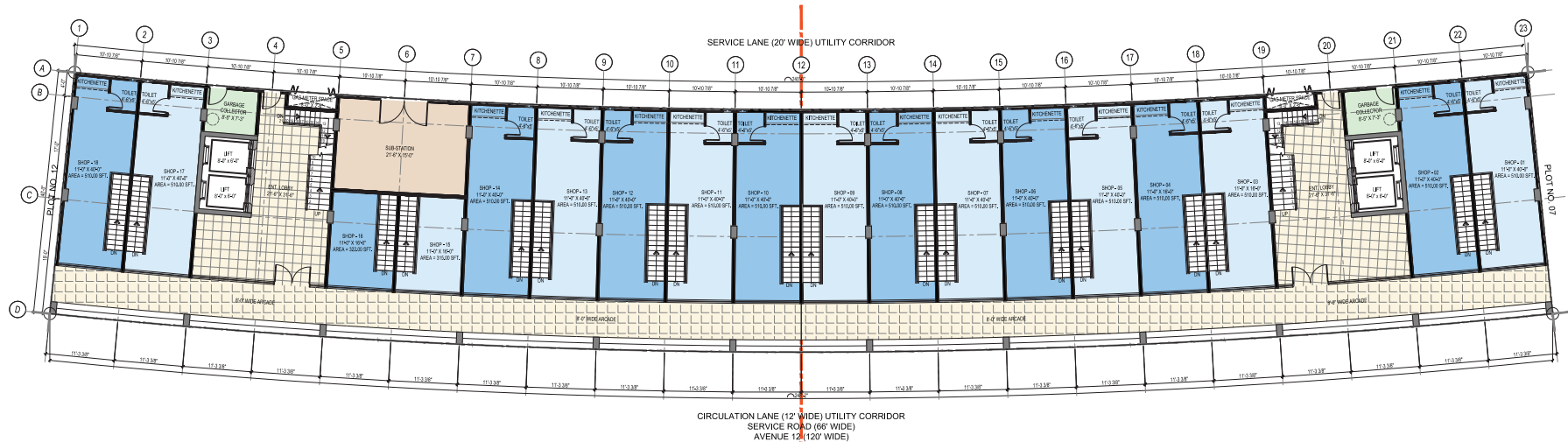
THE APARTMENTS

FLOOR PLANS & DETAILS

BASEMENT FLOOR PLAN



GROUND FLOOR PLAN



1st TO 12th TYPICAL FLOOR PLAN



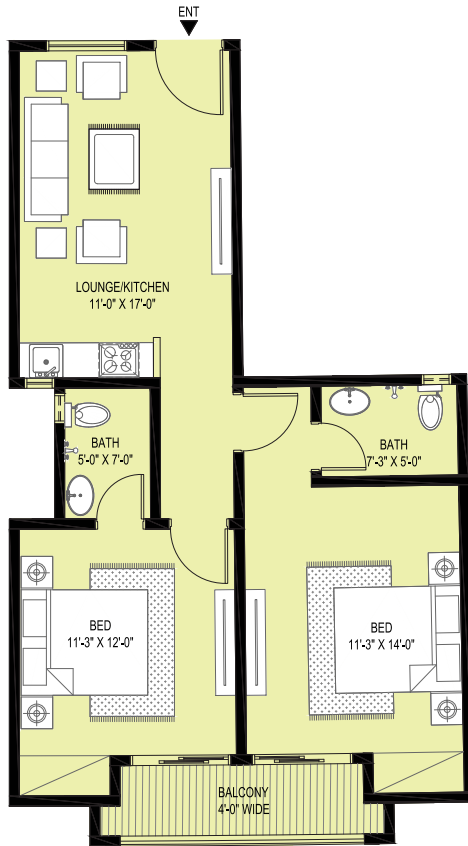
GROUND FLOOR COMMERCIAL UNITS

A unique architecture serving as an inspiration of elegance and sophistication, suited to various commercial business needs. Located at an ideal location at Bahria Town, Zuraaco Residency 2 is the perfect space for various local and global enterprises.



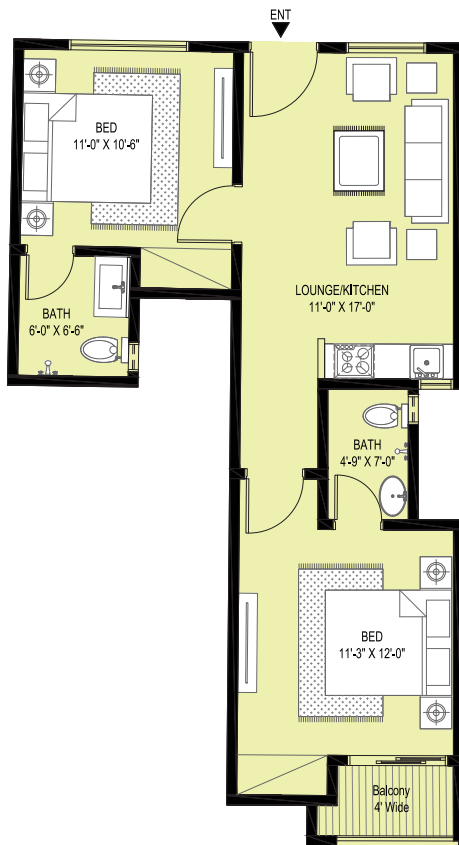
TYPE A

The apartment comes in size of **865** sq feet, consisting of 2 bedrooms with attached bathrooms, a modern kitchen, spacious lounge space and a balcony with a spectacular views of Bahria Town Karachi.



TYPE B

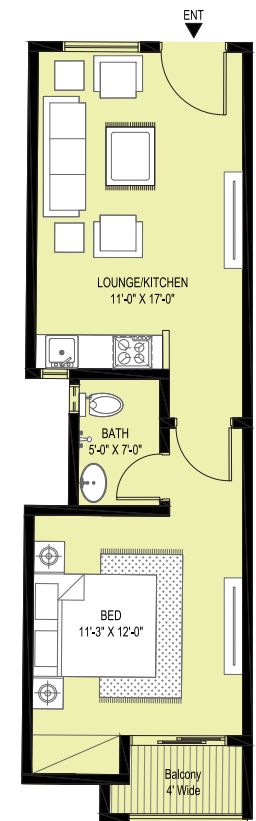
Intricately designed with modern architecture, the apartment is panned across **757 sq ft**, with 2 commodious bedrooms and attached bathrooms.





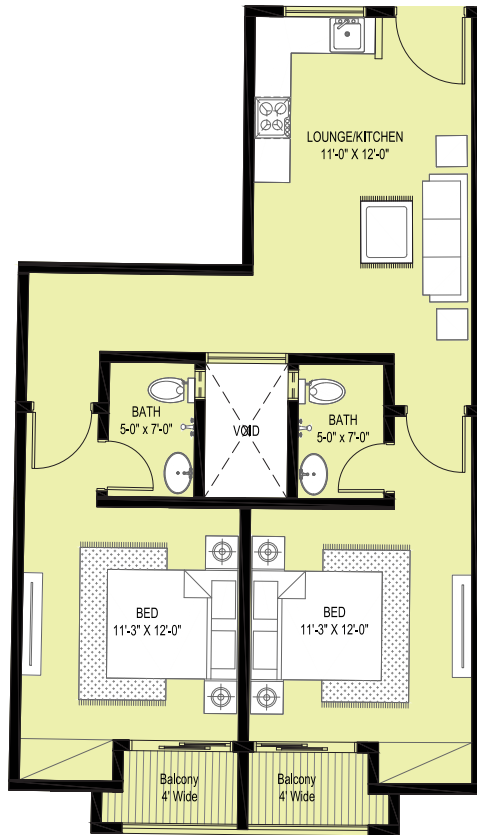
TYPE C

A unique design approach unifying modern architecture. A sophisticated space with 1 bedroom and attached bath. A unique kitchen area, a balcony and a wide passage area ensuring comfort, with the area of **542 sq ft.**



TYPE C1

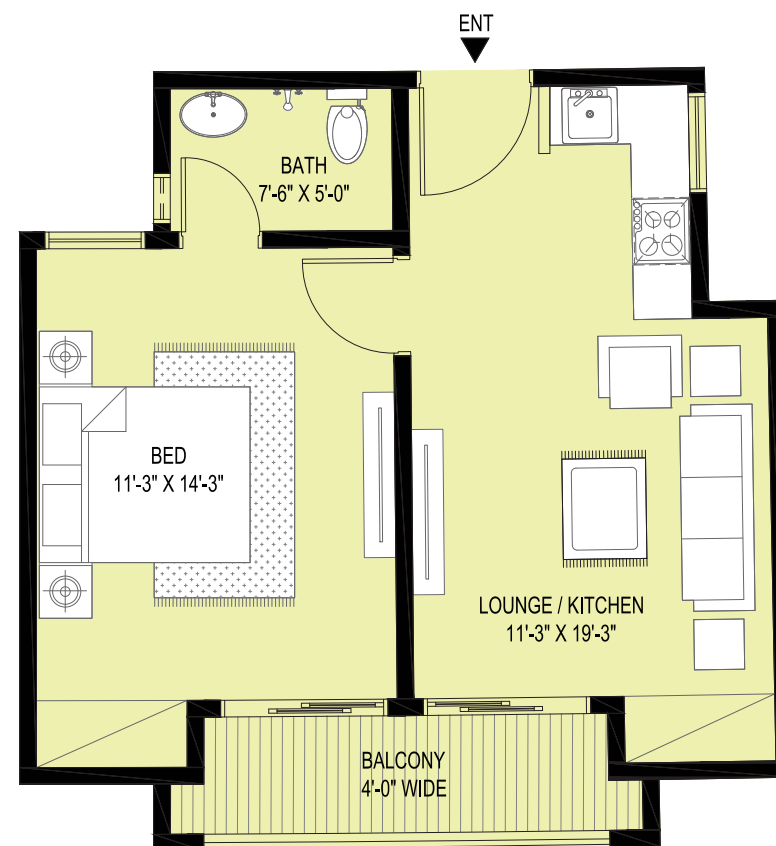
A combination of luxury and aesthetics, the apartment consists of 2 bedrooms with attached bathrooms, wide passage, and 2 balconies with the most serene views at the area of **943 sqft.**





TYPE D

Experience the luxury of exuberant places, as we bring a unique design aesthetic. 2 spacious bedrooms with attached bathroom, a cozy kitchen and balcony space at the area of **610 sq ft.**








About Zuraaco

We are a dedicated team of truly passionate, property professionals who understand our clients' needs and wants and provide them with the best living solution, as we aspire to become the biggest real estate firm in Pakistan.

Contact Us

 +92 304 1115335

 /zuraaco

